

Annual Recap

2023

Boulder Shelter for the Homeless

A Busy Year for the Shelter!

In 2023, as homelessness surged across the state, the number of clients who came to us for shelter increased 15%, to a total of 1,595 folks. High rents, a shortage of affordable housing, and wages that aren't keeping up with housing costs have had a huge impact on our clients – the people who are not fortunate enough to have resources and relationships to fall back on.

So, in response, we've stepped up, by strengthening our commitment to the principle that the solution to homelessness is housing, and by achieving results: a new record of **181 clients exiting from homelessness during the year.**

How? By building and leasing more units of **Permanent Supportive Housing (PSH)**, complete with wrap-around supportive services for people who've been chronically homeless. Every day of 2023 we provided PSH services to roughly 140 people. And in the Shelter itself, we restructured our **Housing-Focused Shelter case management**, so that our case managers are now seeing more clients than ever before.

We have also placed an ever-increasing emphasis on **Diversion** – a compassionate way of helping people to stay out of the shelter system altogether, through such means as family reunification.

And... we have deepened our innovative partnership with **Boulder Community Health**, enabling the highest utilizers of hospital services to address both their homelessness and their medical conditions.

2023 - Key Takeaways

1. Homelessness increased all across the state of Colorado.
2. The Shelter had a 15% increase in demand for services.
3. We helped a record 181 clients exit homelessness.



2022



2023

168

Homeless exits

181

53,733

People using
overnight
services

54,393

373

Capacity
turnaways

414

18

Critical weather
shelter nights

11

In 2023 the shelter experienced an increase in demand and served more people than ever before.

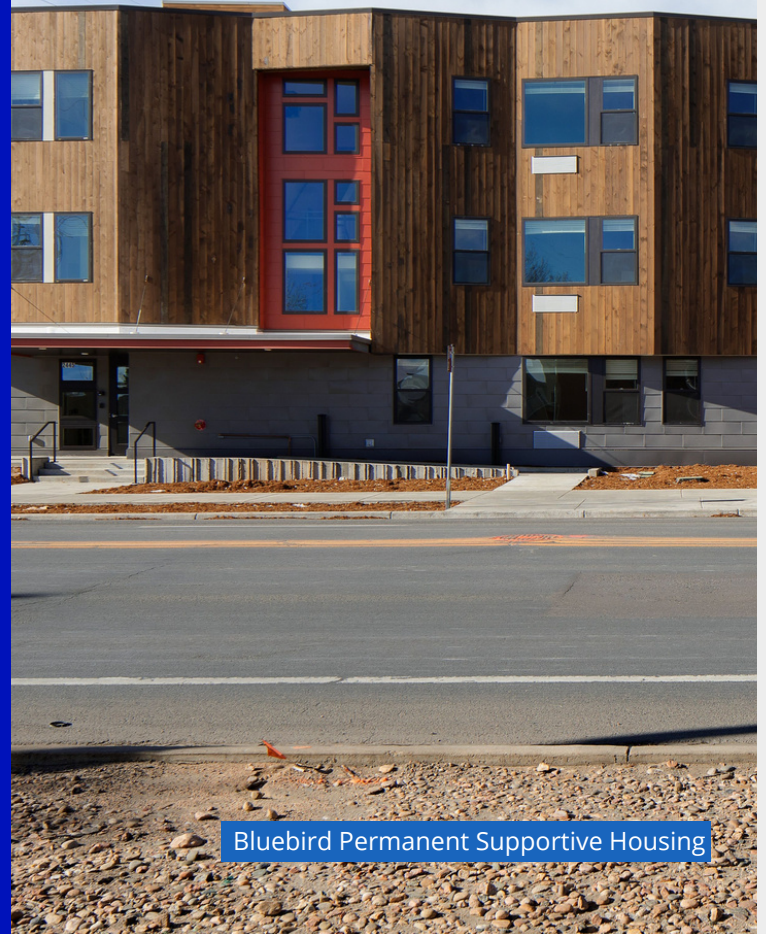
What's ahead for 2024?

Hold onto Your Hat!

The **Bluebird Apartments**, on 30th St. in Boulder, have just opened. Bluebird provides 40 apartment units of Permanent Supportive Housing in the city for people exiting homelessness with multiple barriers to housing stability. We also have two other projects that will open later in the year and will boost our total number of PSH units to 260. That would have been an unimaginable number to us just a few years ago.

Another big step will be the opening of a proposed **Day Center** here at the Shelter. It will provide daytime services for people experiencing homelessness, using our expertise and that of partner agencies to help additional people on the way to their own stable housing. And in a broader context, the Shelter and its governmental and non-governmental partners will increase the resources devoted to **all four elements** of the housing system: availability of units, sources of income to pay rent, engagement and outreach, and support once a person is housed, so they can stay there.

We're ending homelessness, one person at a time, and we're deeply grateful for your generous support of that work.



Bluebird Permanent Supportive Housing

"Every year, the need seems to grow and because of supporters like you, our impact grows as well. We'll continue to work to earn your support, and to show compassion, innovation, experience, and results in all we do." - CEO Michael Block

Donate

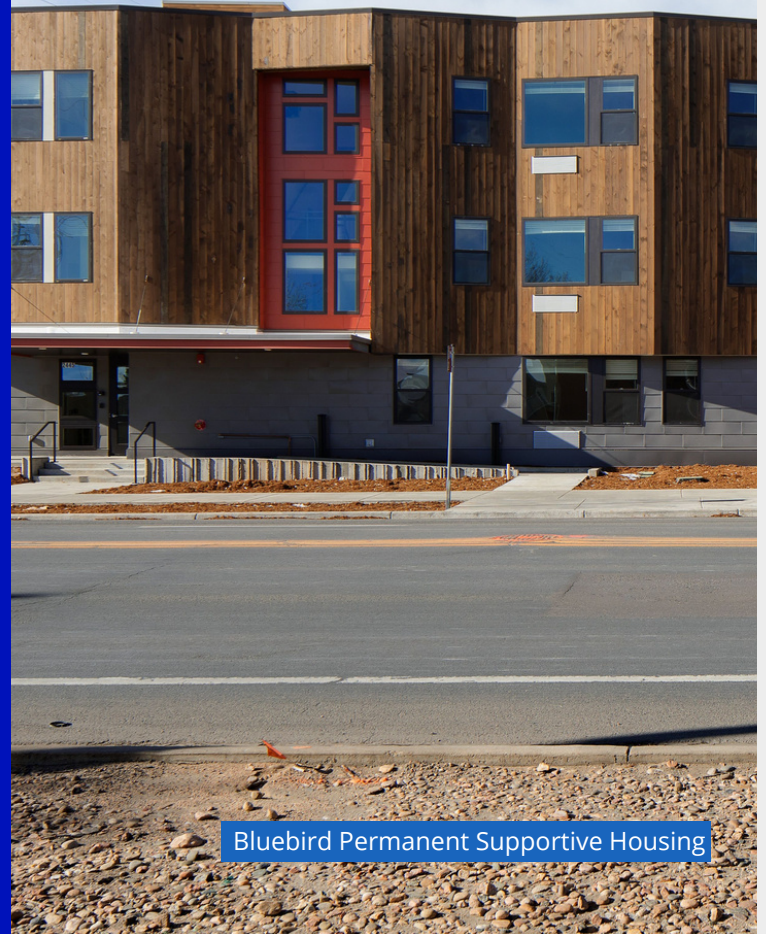
What's ahead for 2024?

Hold onto Your Hat!

The **Bluebird Apartments**, on 30th St. in Boulder, have just opened. Bluebird provides 40 apartment units of Permanent Supportive Housing in the city for people exiting homelessness with multiple barriers to housing stability. We also have two other projects that will open later in the year and will boost our total number of PSH units to 260. That would have been an unimaginable number to us just a few years ago.

Another big step will be the opening of a proposed **Day Center** here at the Shelter. It will provide daytime services for people experiencing homelessness, using our expertise and that of partner agencies to help additional people on the way to their own stable housing. And in a broader context, the Shelter and its governmental and non-governmental partners will increase the resources devoted to **all four elements** of the housing system: availability of units, sources of income to pay rent, engagement and outreach, and support once a person is housed, so they can stay there.

We're ending homelessness, one person at a time, and we're deeply grateful for your generous support of that work.



Bluebird Permanent Supportive Housing

"Every year, the need seems to grow and because of supporters like you, our impact grows as well. We'll continue to work to earn your support, and to show compassion, innovation, experience, and results in all we do." - CEO Michael Block

Donate